

# Remote Support via ShowMyPC

ShowMyPC is a program that allows us to help you over the internet. The program allows us to see your screen, move your mouse pointer, and enter text.

However, we can't just connect to your computer whenever we want. You have to grant us permission to connect each time. ShowMyPC manages this by creating a unique 12-digit password. The password only works for a single session and each session has a one-hour time limit.

To best serve our customers, we may schedule a remote support time slot and ask you to generate this password using the steps below before calling. If you have any trouble generating the password, just give us a call and we can help step you through the process.

## TaxColl2k Not Installed or Won't Open

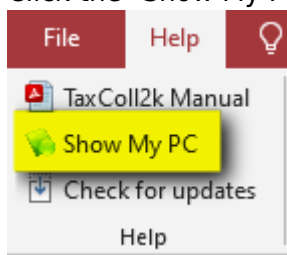
The instructions below assume that you are able to get into the TaxColl2k program. If that is not the case, you can download the latest copy of ShowMyPC using this link: [ShowMyPC](#). "Open" or "Run" to start ShowMyPC as soon as the download finishes. Continue with Step 3 below.

## Begin a ShowMyPC Session

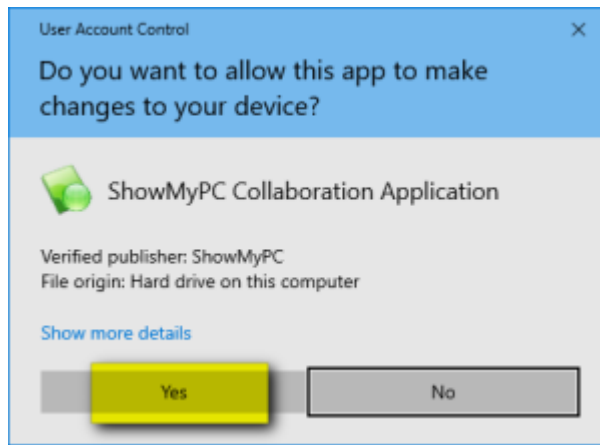
1. Open the TaxColl2k program



2. Click the "Show My PC" button in the Help section of the ribbon



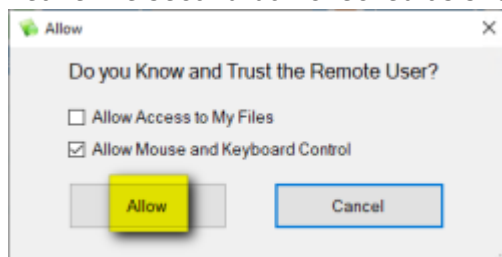
3. Wait **up to 20 seconds** for the User Account Control prompt to appear
4. Click the [Yes] button on the prompt:



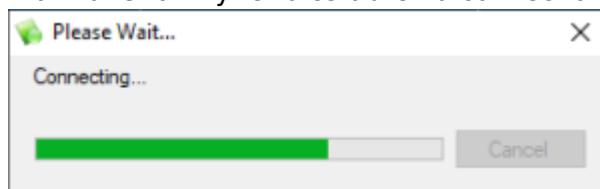
5. Click where it says [Start a Meeting]:



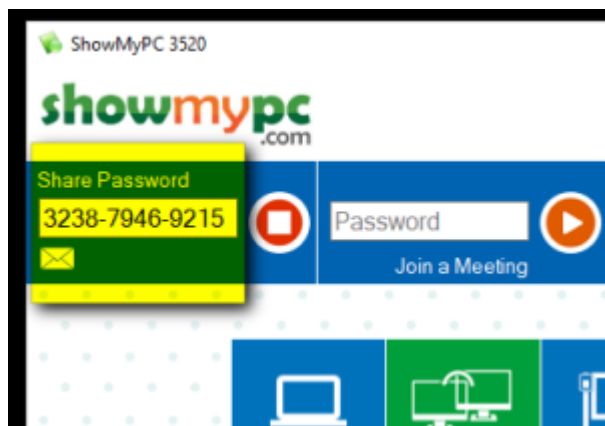
6. Leave the second box checked as shown and click [Allow]:



7. Wait for ShowMyPC to establish a connection:



8. ShowMyPC will generate a 12-digit one-time password. This is the number you need to read to us over the phone so that we can connect from our end:



From:

<https://grandjean.net/wiki/> - Grandjean & Braverman, Inc

Permanent link:

[https://grandjean.net/wiki/tax\\_coll/showmypc?rev=1587563800](https://grandjean.net/wiki/tax_coll/showmypc?rev=1587563800)

Last update: **2020/04/22 13:56 UTC**

